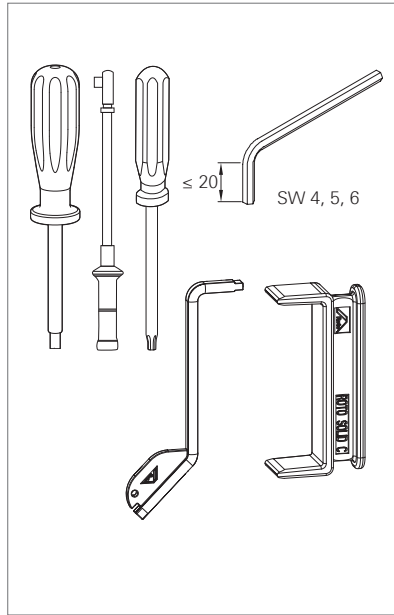
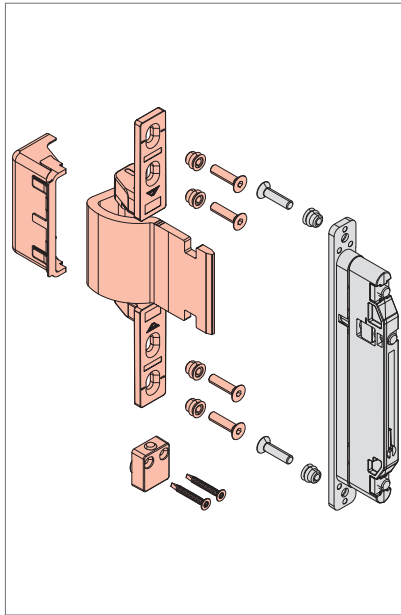
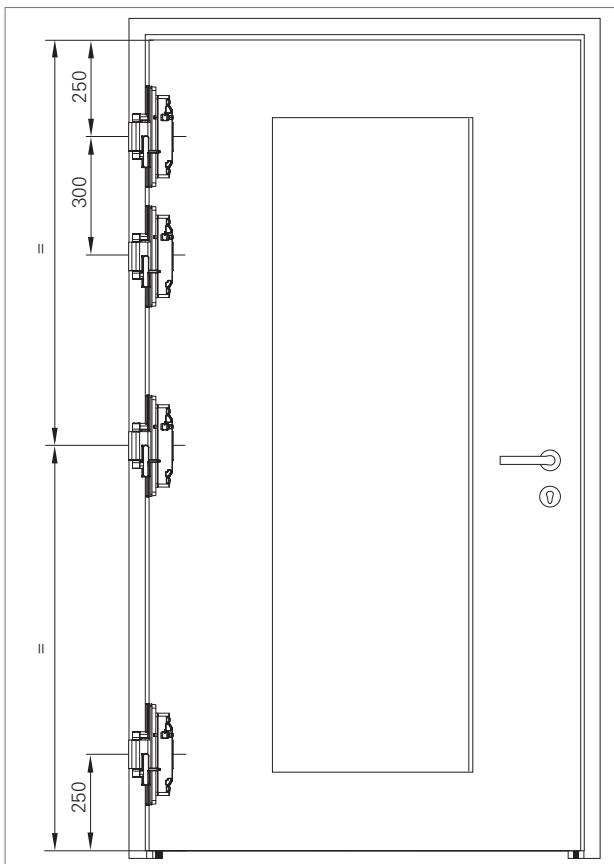


Roto Solid C | C7.140 – innen öffnend
Roto Solid C | C7.140 – inward opening



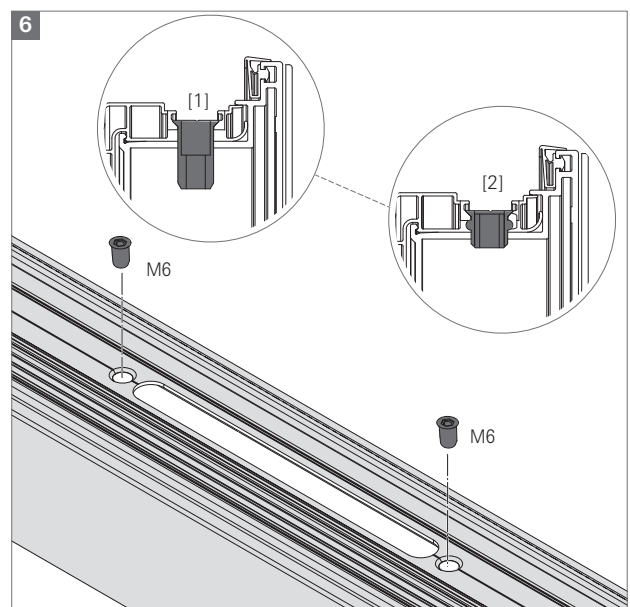
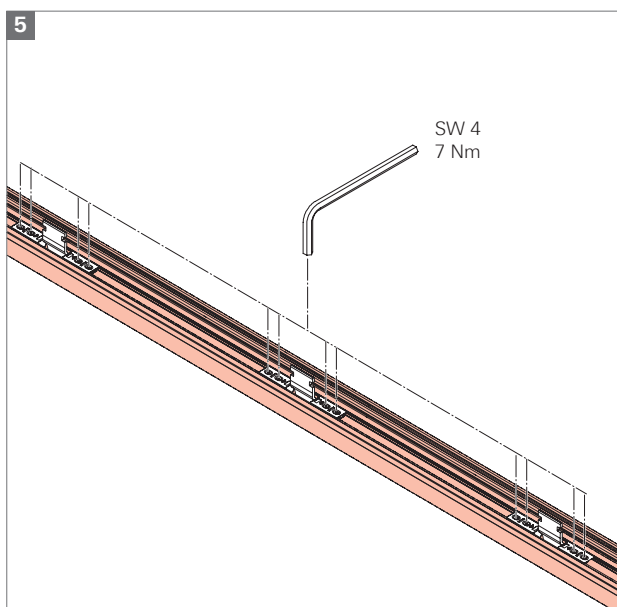
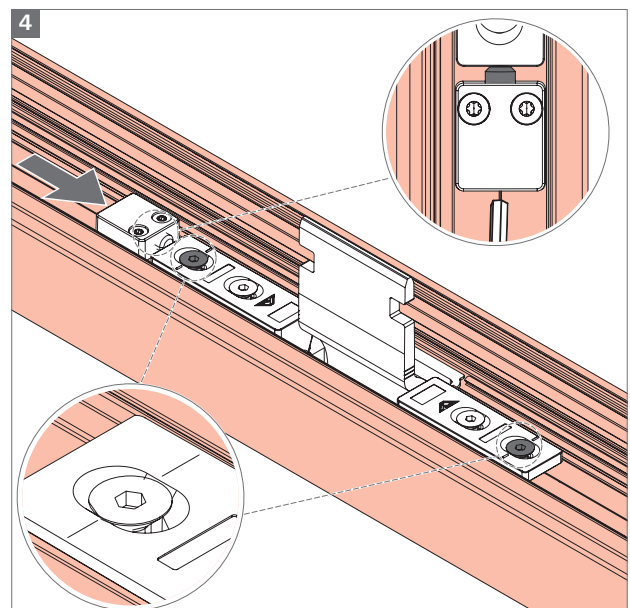
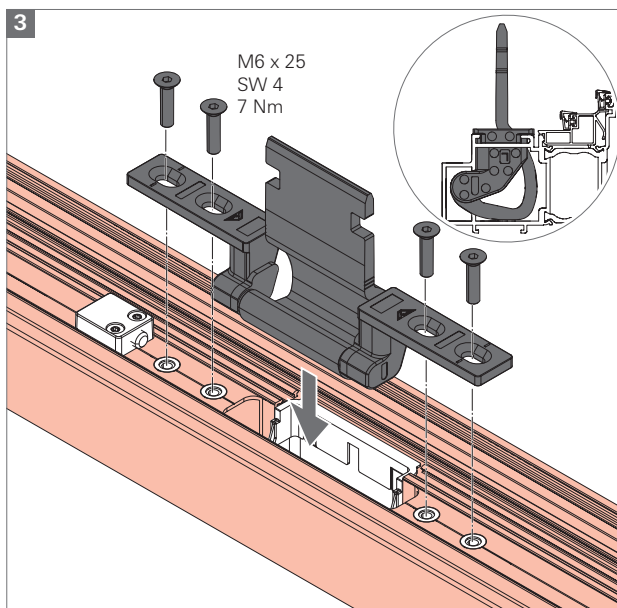
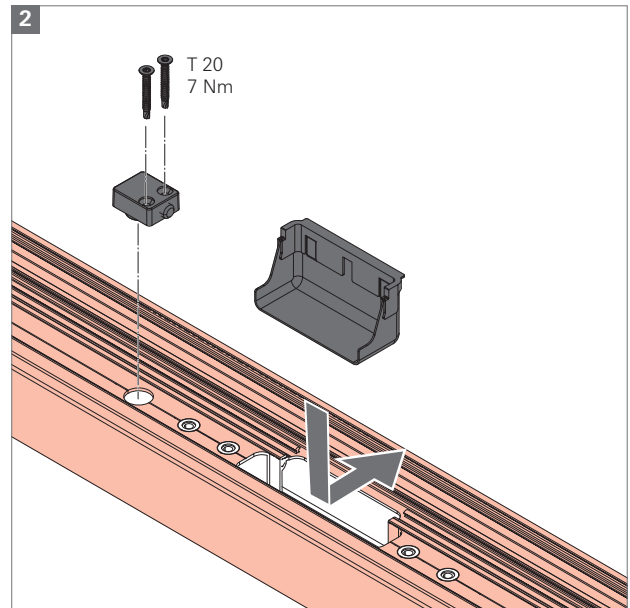
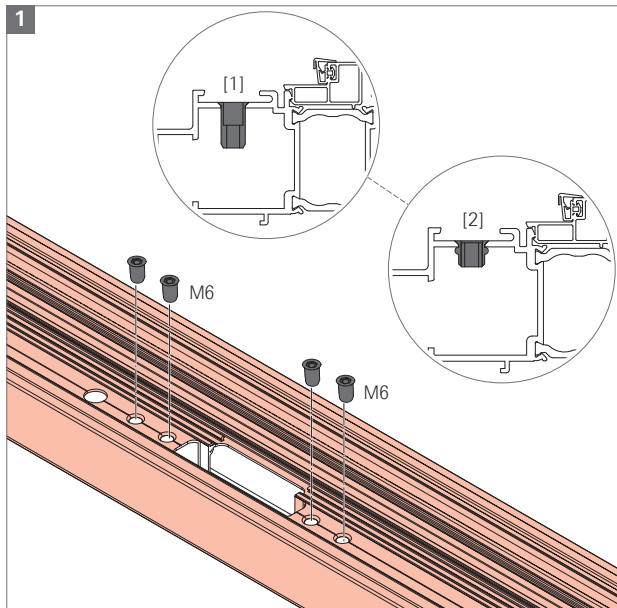
-
- i** **INFO**
Fräszeichnung beachten.
-
- i** **NOTE**
Note the routing drawing.
-

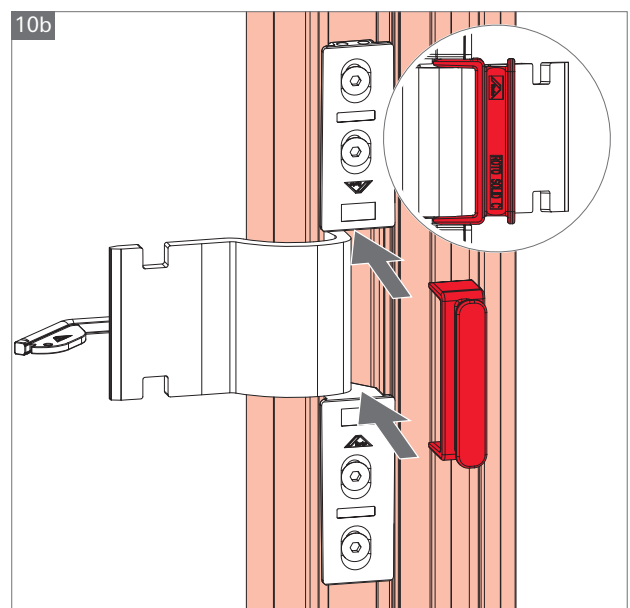
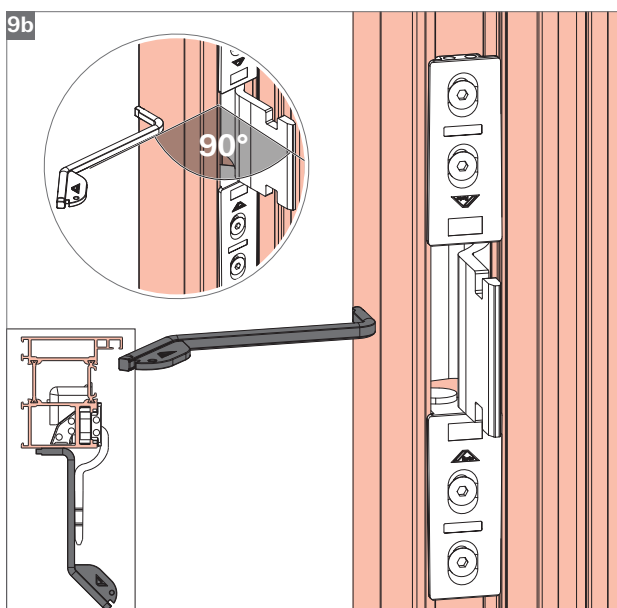
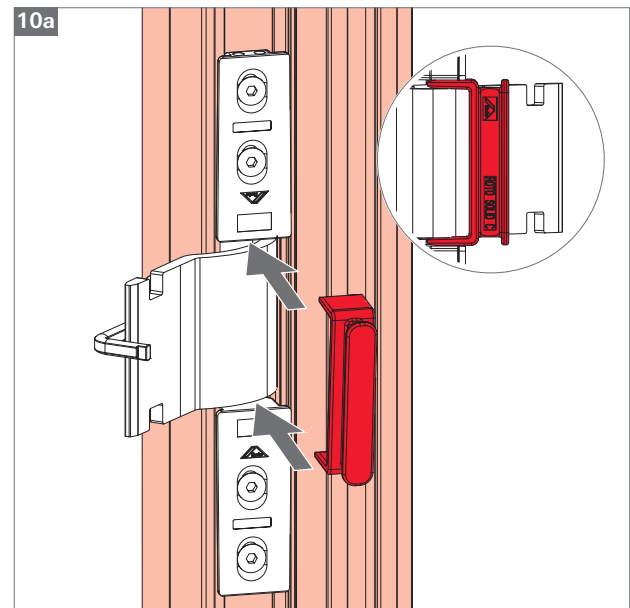
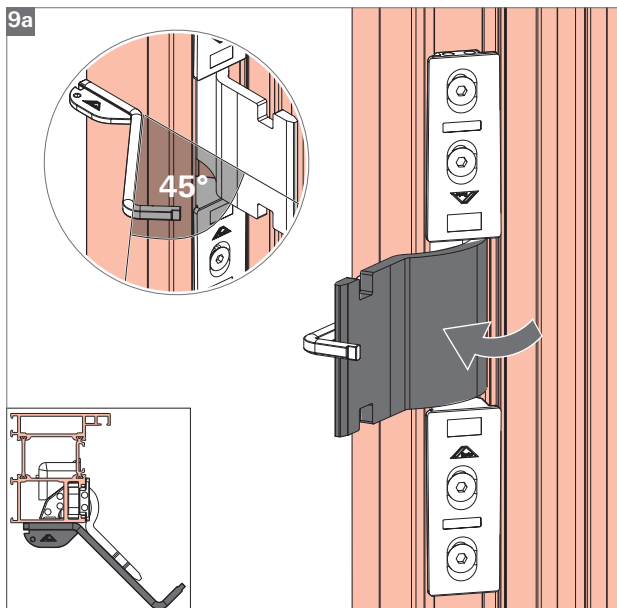
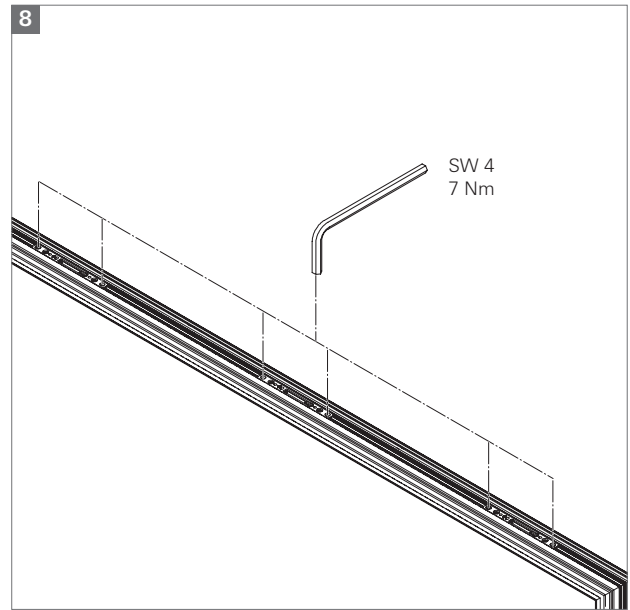
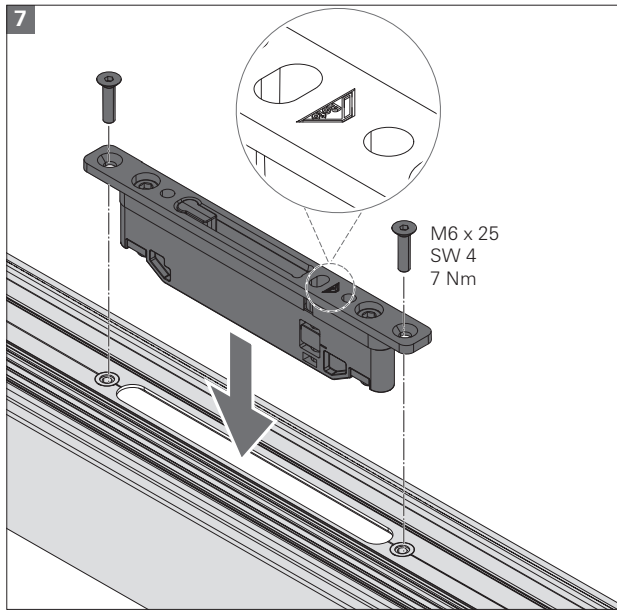


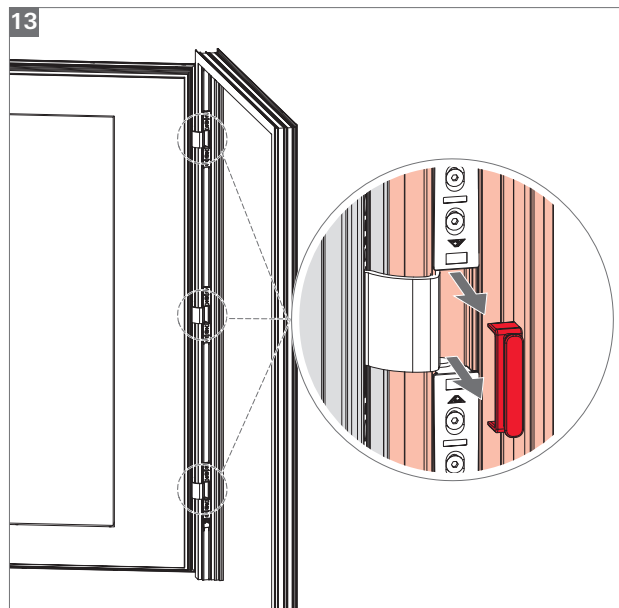
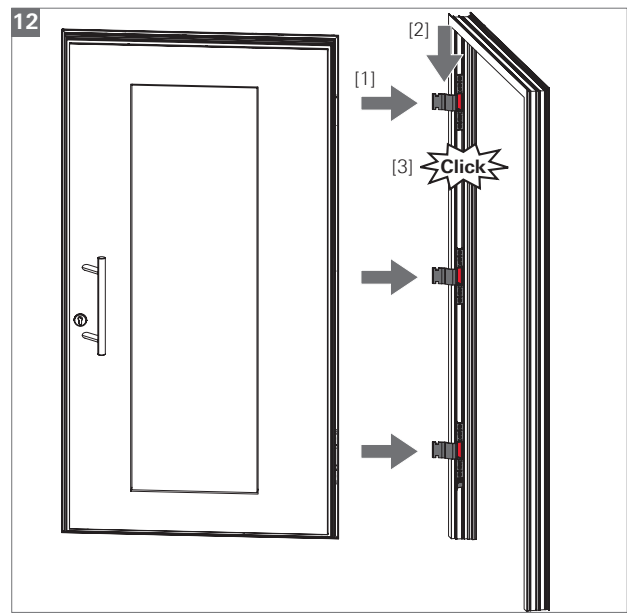
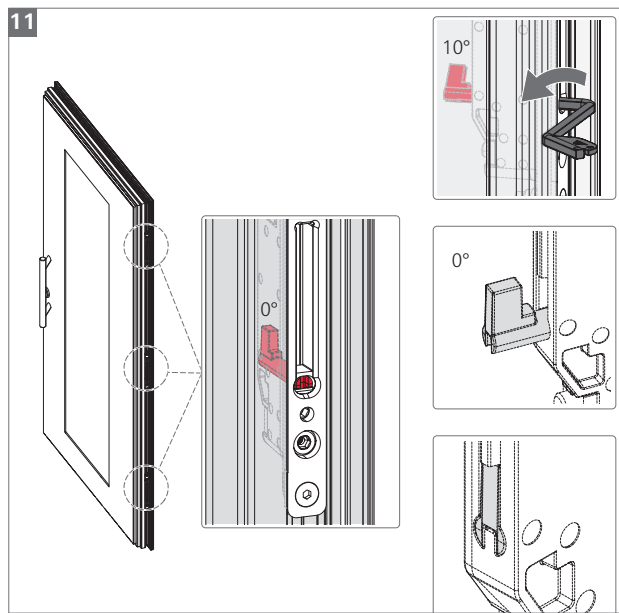
-
- i** **INFO**
- FH > 2200 mm = 3 Bänder
 - FH > 2500 mm = 4 Bänder
 - mit Türschließer = ≥ 3 Bänder
 - 100 kg = 2 Bänder
 - 140 kg = 3 Bänder
- CTL_88
-

-
- i** **NOTE**
- SH > 2.200 mm = 3 hinges
 - SH > 2.500 mm = 4 hinges
 - with door closer = ≥ 3 hinges
 - 100 kg = 2 hinges
 - 140 kg = 3 hinges
- CTL_88
-

Montage
Installation

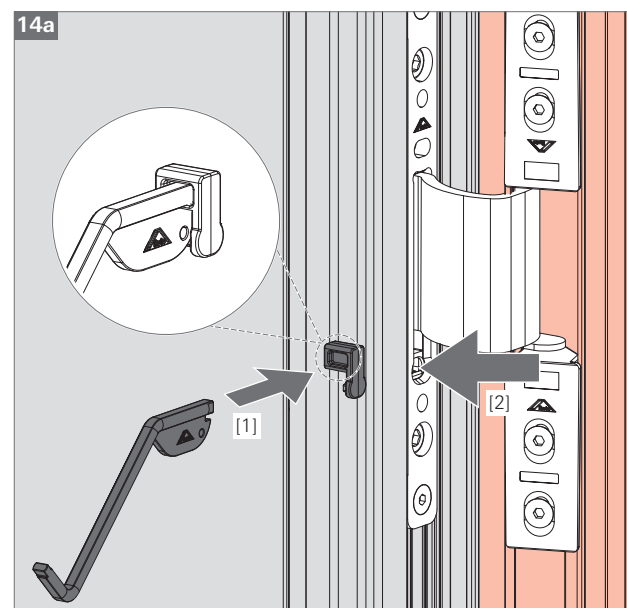
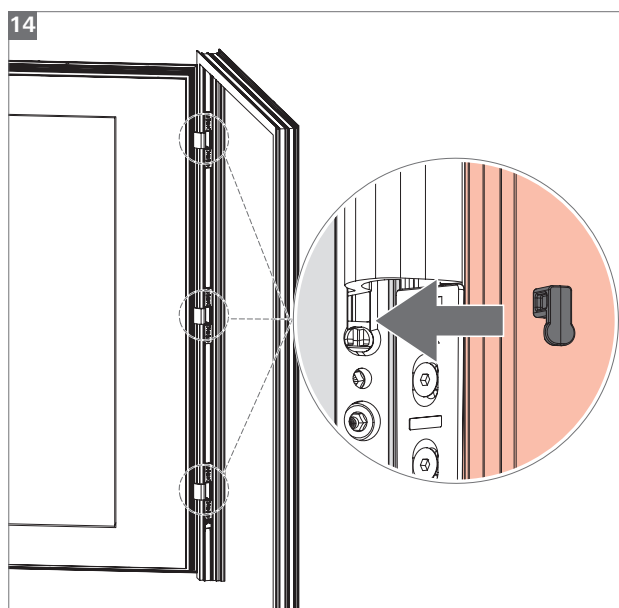


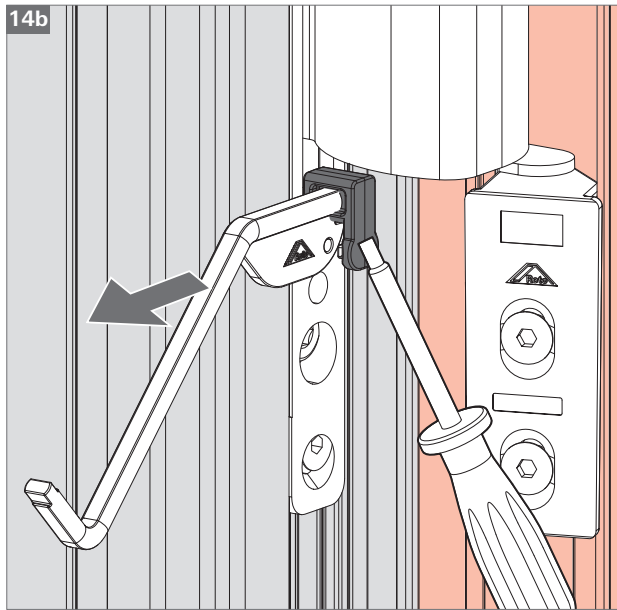




i INFO
Türstopper oder Drehbegrenzer verwenden, sonst Kollision zwischen Flügel und Rahmen (Öffnungswinkel profilabhängig).

i NOTE
Use a door stopper or turn restrictor otherwise collision between sash and frame (opening angle profile related).

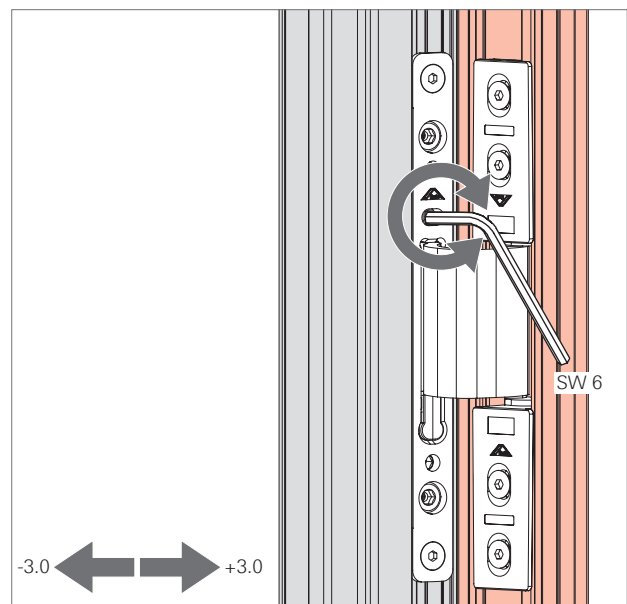


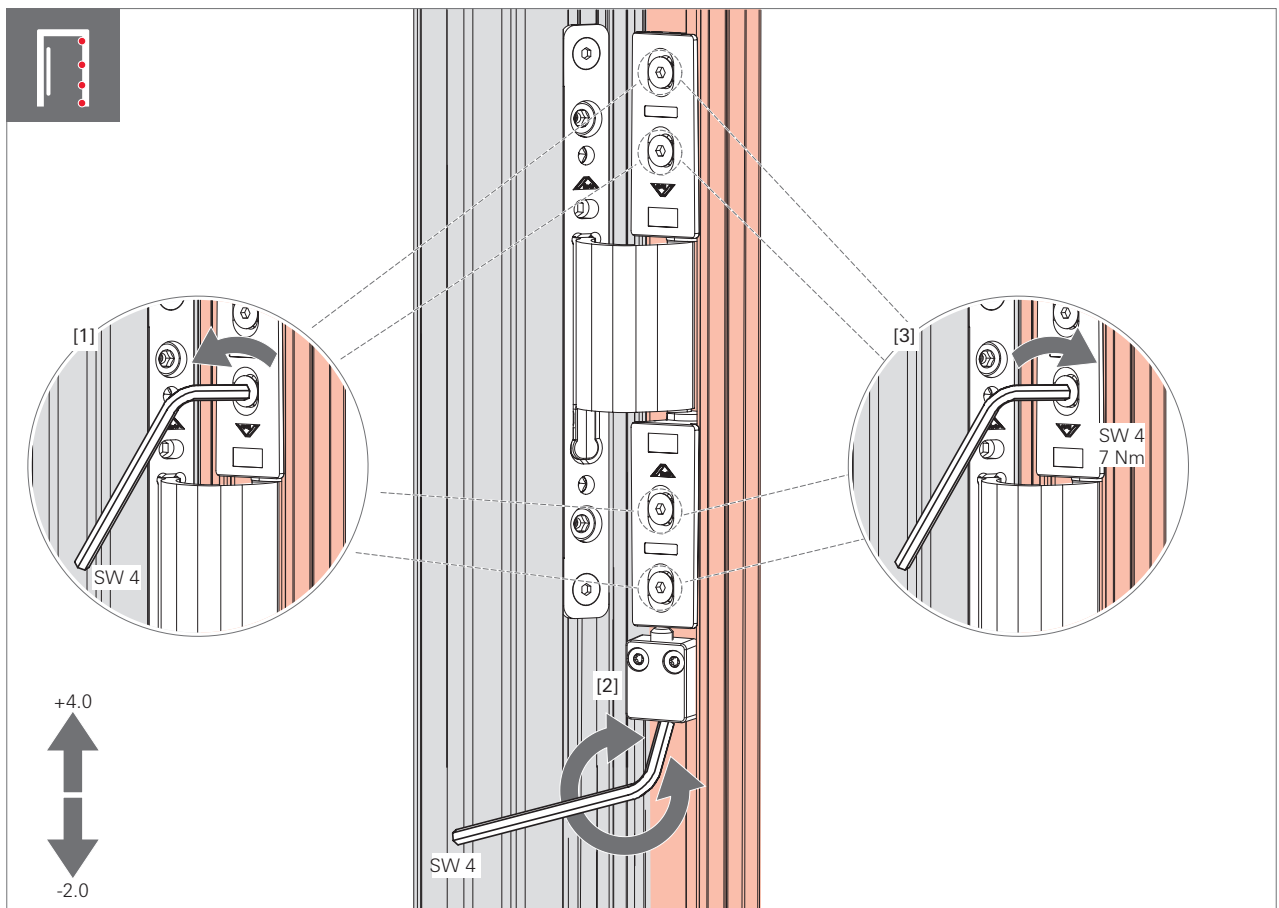
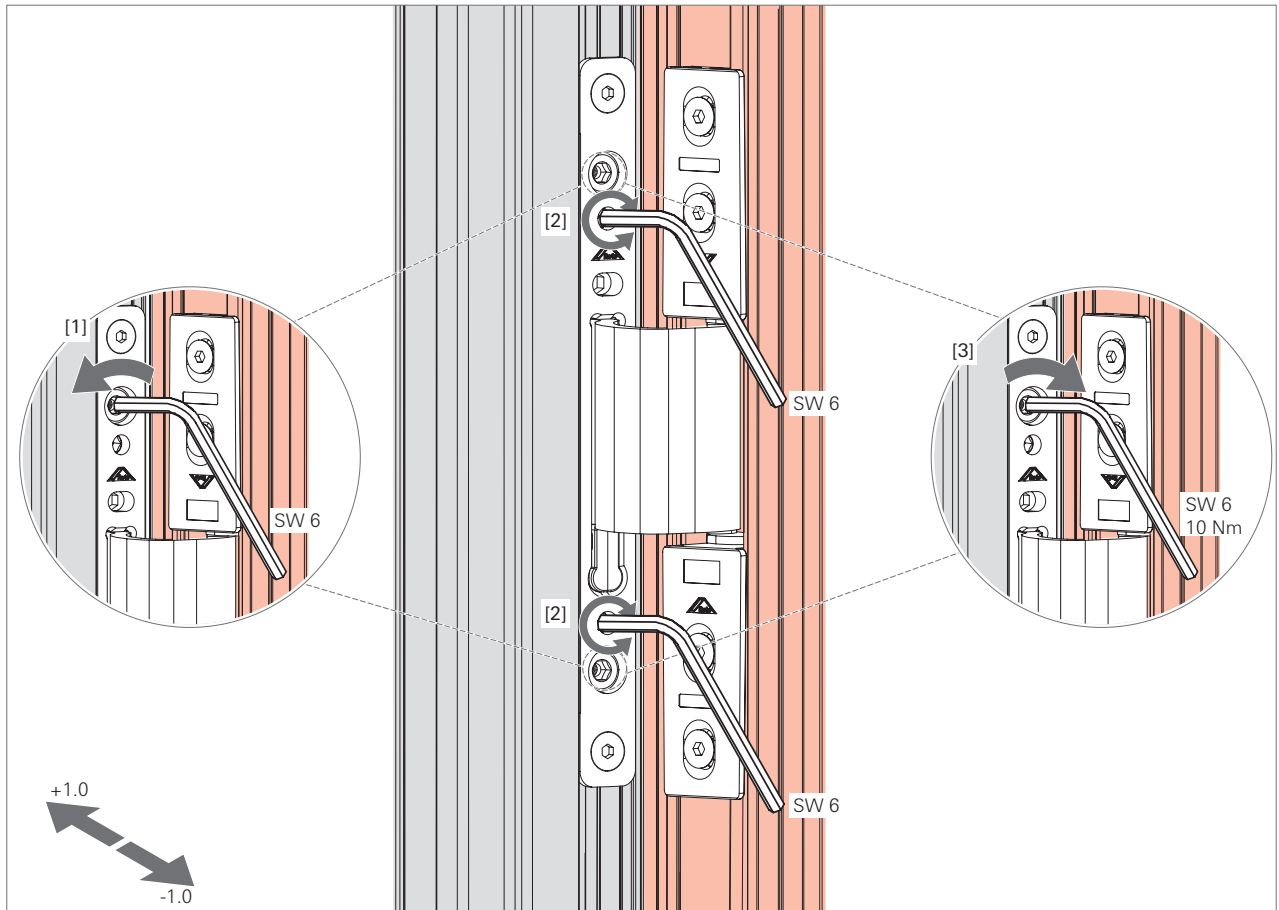


Justierung
Adjustment

i **INFO**
Wenn nötig Tür vor Justierung entlasten.

i **NOTE**
If necessary relieve the door before adjustment.

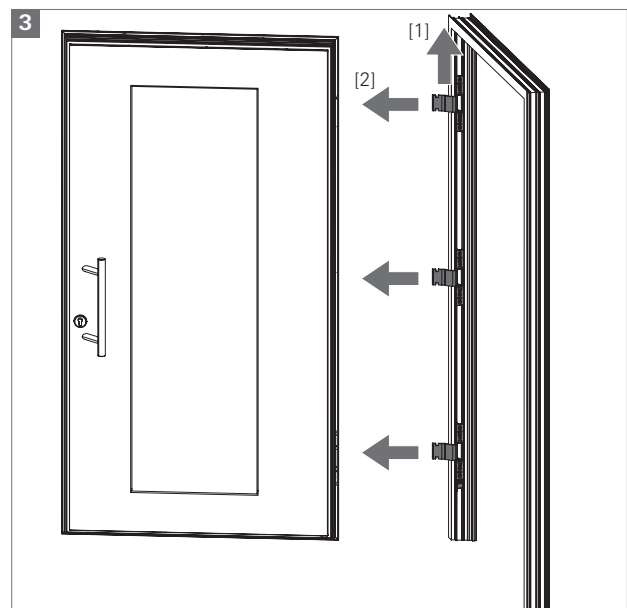
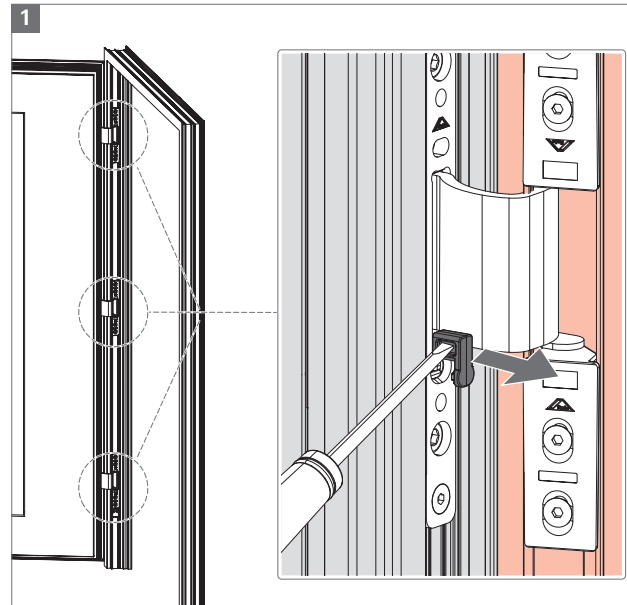
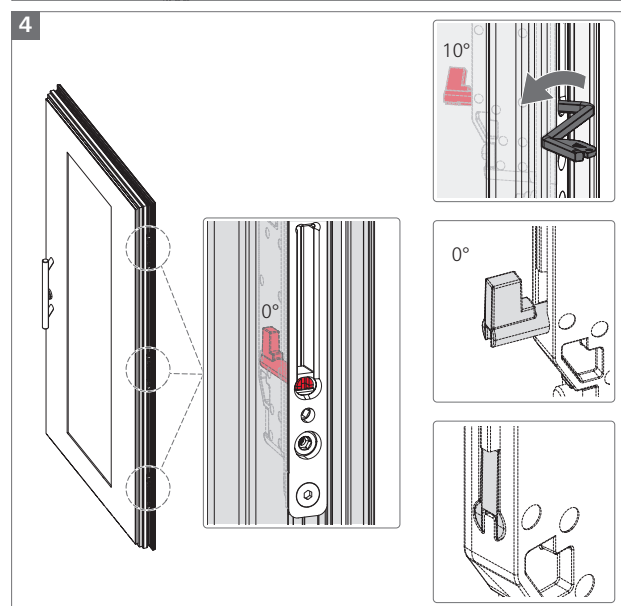
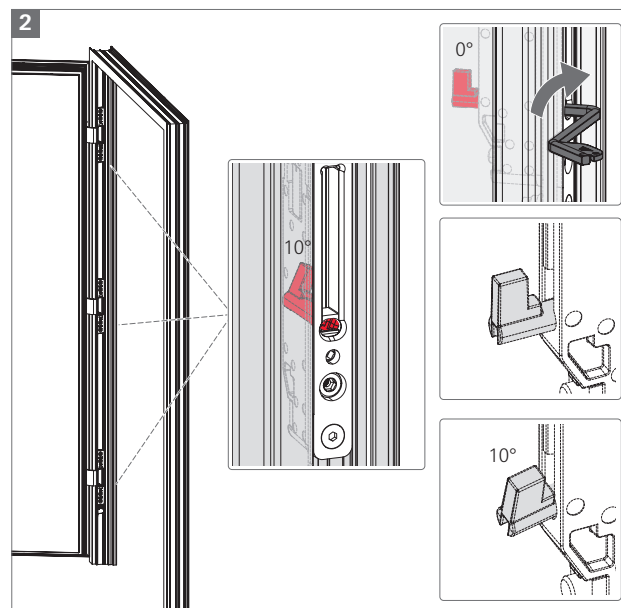




Demontage Dismantling

INFO
Wenn nötig Tür vor Demontage entlasten.

NOTE
If necessary relieve the door before dismantling.



CE

0757
Roto-Frank Austria GmbH
Lapp-Finze-Str. 21
A-8401 Kalasdorf bei Graz
Austria

Türband lt. EN1935 – Roto Solid C7.140
LE/DoP-Nr.: KD/DoorC7.140/Nr. 001/CPR/2017-02-09

17
EN 1935:2002-05
Türband 3-teilig
für Türen in Rettungswegen

Selbstschließend **bestanden**
(-3Nm Reibmoment)
(60kg Türmasse)
(120kg Belastungsverformung)
(180kg Überbelastung)

Dauerfunktionstüchtigkeit **bestanden**
(200 000Zyklen)

Gefährliche Substanzen **bestanden**

Gebrauchsklasse	Dauerfunktion	Massive Tür	Feuer-/Rauchschutz	Sicherheit	Korrosionsverhalten	Sicherheit/Eintrichschutz	Brandklasse
2	7	3	0	1	4	0	10

Zertifikat zur Bescheinigung der Leistungsbeständigkeit
Nr. 0757-CPR-2299FT-7031575-2 erstellt durch
iR Rosenheim NB-Nr. 0757